

POWER SUPPLY UNIT

PSU-30V



The PSU30V serves to boost and stabilise the car supply voltage from 14V nominal to 30V stabilised. This is to enable actuators to be driven from a regulated 30V supply instead of the unregulated 14V car supply. For solenoids, this allows faster actuation times.

Electrical

- Supply Voltage 8V to 16.7V at full rated power
- Supply Current quiescent <100mA
- Supply Current operating <12.6A at 14V at full rated power
- Supply Voltage not to exceed 16.7V continuous (unit has reverse polarity protection and is protected against momentary voltage spikes of either polarity greater than 16.7V)
- Output Voltage 30V+0%, -7% at 1A load
- Output Current 5A max
- Output impedance 100mohm typ
- Temperature coefficient $\pm 5\text{mV}/^{\circ}\text{C}$ typ
- Current trip providing some protection against momentary short-circuits or short-term overloads
- Output protected against transients

Electro Magnetic Compatibility

- Complies with the essential protection requirements of 89/336/EEC

Application

- Provision of a 30V stabilised voltage supply

Connection definition

- Integral, sealed, military standard connector Lemo EHS.1F.308.XLC
- For PIN numbers please contact our technical consultancy department.

Mechanical

- Case material Magnesium alloy, chromate converted and painted with black epoxy
- Weight 160g

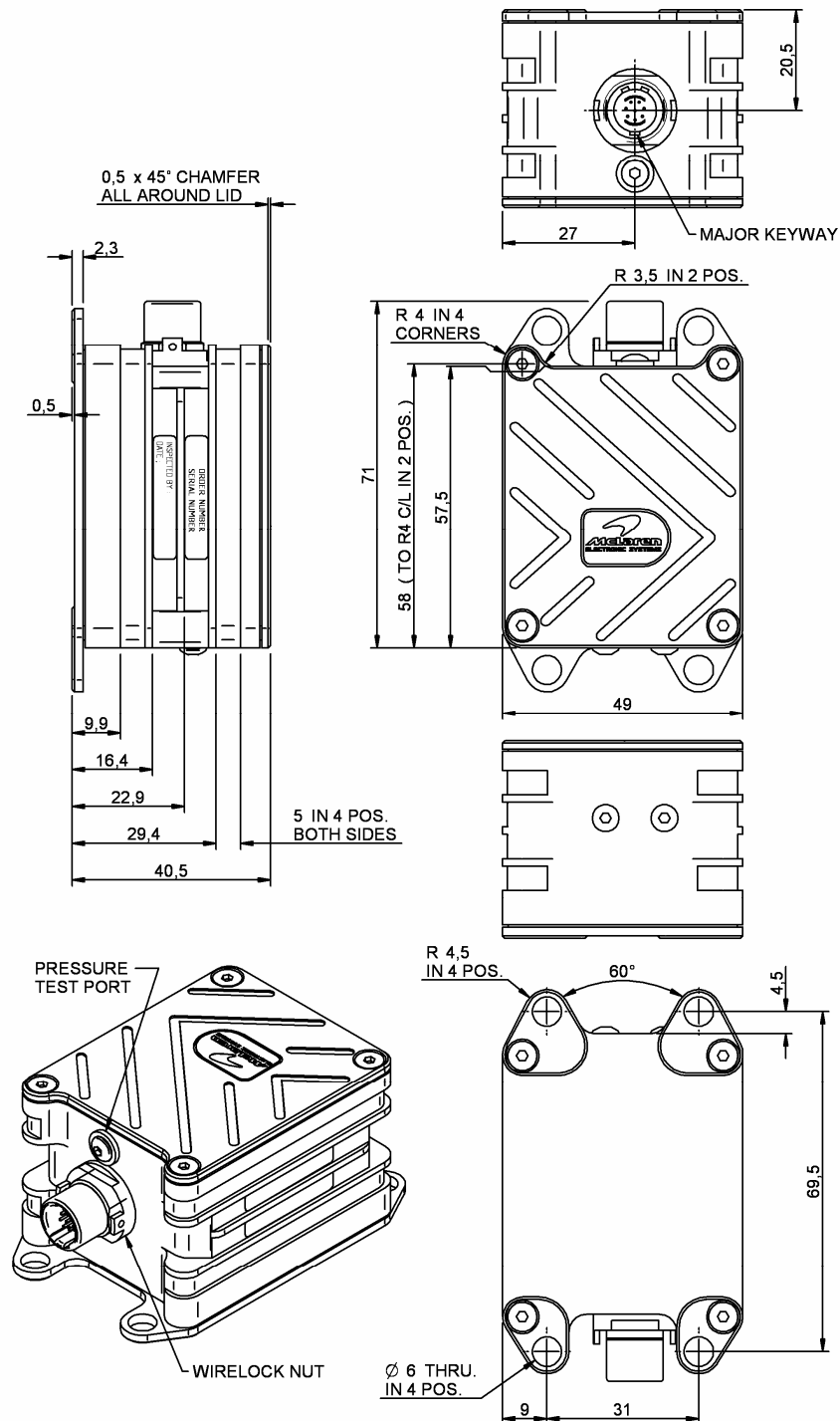
Environmental

- Splash resistant to standard motorsport fluids
- Temperature not to exceed 65°C at the centre of the top lid during operation – modest forced convection is advised
- Storage Temperature -40°C to $+85^{\circ}\text{C}$
- Vibration 100 to 1000Hz, all axes, 24 hours

20/6/05

POWER SUPPLY UNIT

PSU-30V



20/6/05